

MICROLEPIDOPTERA FROM INDO-CHINA AND JAPAN.

By A. DIAKONOFF.

ZOOLOGICAL MUSEUM, BUITENZORG, JAVA.

1<sup>st</sup> NOTE

During a short visit to the Muséum National d'Histoire Naturelle, Paris, the author was kindly given permission by the authorities of that Museum to select from unnamed material some Microlepidoptera, chiefly *Tortricidae* from Indo-China and Japan for study. The material from Indo-China, from the collection of Abbé DE JOANNIS, was of especial interest, as very little is known about the fauna of Microlepidoptera from that country. The results came up to our expectations: among the latter material most were typically Malayan species, some were Indian and one species was previously described from the Papuan region.

Altogether 6 new species are described below, viz. 3 from Indo-China and 3 from Japan. We had the opportunity of comparing this material with some types in the collection of the British Museum, London. The types are preserved in the Paris Museum, certain paratypes are in the author's collection.

The author wishes to express his sincere gratitude to Mr. J. BOURGOGNE, Keeper of Lepidoptera at the Paris Museum, for his kind help and suggestions.

MATERIAL FROM JAPAN

PHALONIIDAE.

*Phalonia hygroides* MEYR., 1936. Exot. Micr., v. 5, p. 22 (Japan). — Tokyo, p. 7, 1909 (Edme GALLOIS). 1 ♀.

TORTRICIDAE.

*Epagoge stenochorda* nov. spec.

στερος = narrow, γορδῆ = a sinew.

♀ 18 mm. Head, palpi, antennae and thorax pale ochreous, collar a little brighter. Abdomen pale ochreous-greyish. Legs pale ochreous. Fore wing with costa gradually curved throughout, apex little rounded, termen moderately convex, little oblique. Glossy whitish-ochreous, transverse

fascia moderately broad, curved inwardly below costa, abruptly dilated posteriorly along base, fawny-brown, tinged yellowish and mixed with

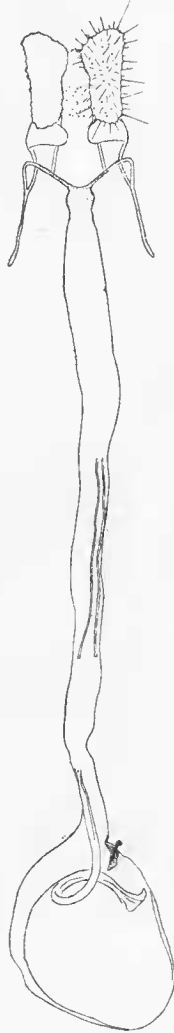


FIG. 1. — Genitalia de *Epagoge stenochorda* nov. spec. ♀.

dark brown on costa and very faintly along the edges; costal patch of the same colour, at  $4/5$ , small, rectangular, outwardly oblique, its

edges continued by narrow brownish-yellow fasciae : anterior running to tornus, posterior less distinct, interrupted ; short, sinuate strigulae on costa and in apex, dark-brownish ; discal stigma on lower angle of discal cell rather small, blackish, with yellowish suffusion posteriorly. Cilia pale ochreous. Hind wing pale ochreous-greyish, cilia somewhat paler.

Genitalia (fig. 1) : Ovipositor lobes moderate ; ostium wide, simple, limen a narrow curved rod ; no colliculum, ductus bursae simple ; bursa copulatrix moderate, egg-shaped, signum a short hook, capitulum projecting. (Spermatophore with a coiled column, in figure broken in two parts). Gen. No. 538.

Japan, Chûzenji, 10-8-1909 (Edmonde GALLOIS) 1 specimen.  
*Cacoecia semistructa* MEYRICK, 1937. Exot. Micr., v. 5, p. 129. (China).  
— Environment of Tokio, 1906 (J. HARMAND). 1 ♂.

*Cacoecia contemptric* MEYRICK, 1925. Acad. Romana Mem. Sect. Stiint, ser. 3, v. 3, p. 7. Exot. Micr., v. 4, p. 526, 1934. (China). — Tokyo, 8-6-1909 (Edme GALLOIS). 3 ♀.

*Cacoecia piceana* LINNÉ, 1758. Syst. Nat., ed. X, p. 531 (Europe, N. Asia, Japan). — Environment of Tokyo, 1906 (J. HARMAND). 1 ♀.

*Cacoecia similis* BUTLER, 1879. Ill. Het. Brit. Mus., v. 3, p. 79, t. 60, f. 4. WALSHINGHAM, Ann. Mag. Nat. Hist. (7), v. 5, p. 379, 1900 (Corea, Japan). — Yose, line of Kofu, 4-7-1909 (Edm. GALLOIS). 1 ♀.

*Cacoecia ingentana* CHRETIEN, 1881. Bull. Soc. Nat. Moscou, 1881, p. 64 (India, China, E. Siberia, Japan). — Environment of Tokyo, 1906 (J. HARMAND). 2 ♂, 2 ♀.

*Cacoecia longicellana* WALSHINGHAM, 1900. Ann. Mag. Nat. Hist. (7), v. 5, p. 378 (China, Japan). — Environment of Tokyo, 1906 (J. HARMAND). 1 ♀.

### **Homona magnanima** nov. spec.

♂ 22-30 mm. Head, antennae, thorax, patagia and tegulae even light ochreous-grey. Palpi ferruginous, moderately long. Abdomen brownish-grey, anal tuft ochreous. Legs ochreous, suffused with fuscous. Fore wing broad, elongate-truncate, costa with a large, almost semicircular fold to 1/3, considerably arched along this, subconcave (almost straight) beyond this, apex very slightly produced, almost rectangular, termen straight, vertical, tornus broadly rounded. Glossy ochreous-fuscous tinged ferruginous, base broadly suffused with ferruginous almost as far as 1/3 ; projecting patch of scales at base of dorsum (when the wings are folded this basal patches of scales form a small erect crest), and costal fold, except its apical 1/3, dark orange-fuscous ; transverse fascia divided in two parts : 1) a sharply defined oblique elongate-ovate patch on costa before middle, dark brown, its anterior and lower edge black ; 2) a broad ferruginous suffusion lilac-grey along posterior half, running from below the abovementioned patch obliquely to dorsum before tornus,

its anterior margin from  $\frac{1}{3}$  of wing-breadth at middle to  $\frac{3}{5}$  of dorsum, well defined, very narrowly light-edged, sinuate : convex in middle of disc, concave above dorsum ; its posterior edge suffused, very oblique outwardly, almost horizontal, to  $\frac{2}{3}$  of disc before tornus, from there sharper edged by a minute brownish strigula, vertical, slightly concave, to dorsum before tornus ; costal patch often with the edges suffused, narrowly elongate-semiovate, extended along costa from beyond middle to before apex, light brown ; a series of vertical interrupted brownish-ferruginous strigulae scattered over the wing, especially distinct before termen. Cilia light ochreous with ferruginous tips along upper half of termen. Hind wing ochreous-greyish, pale ochreous along costal  $\frac{1}{3}$ , cilia light ochreous.

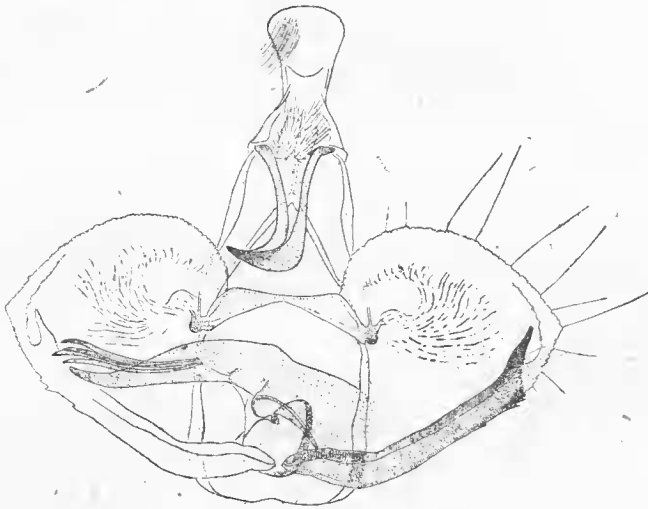


FIG. 2. — Genitalia de *Homona magnanima* nov. spec. ♂.

Genitalia (fig. 2) : Tegumen erect, rather narrow ; uncus with dilated top ; socii moderate, elongate, drooping ; gnathos strong, with a large curved top ; valva semiovate, cucullus very short, slightly pointed, sacculus very strong, darkly chitinised, with short serrations under the top, ending in a large thorn ; traustilla strong, narrowed in middle, with chitinised extremities ; aedoeagus long, little curved, pointed ; cornuti a sheaf of very long spines (Gen. N<sup>o</sup>. 529).

Japan, Tokyo, 11-5-30-6-1909 (Edmonde GALLOIS). 11 ♂ Closely allied to *coffearia* NIETN., but much larger, more greyish tingred, with costal patch suffused not dilated posteriorly and covering the whole apex, 'as in *coffearia* ; also distinct by chitinised sacculus. Probably this species also occurs in New Guinea.

*Pandemis chlorograptus* MEYR., 1931. *Exot. Mier.*, v. 4, p. 150 (China). — Chusenji, 10-8. — 13-9-1909 (Edme GALLOIS). *Environment of Tokyo, 1906* (J. HARMAND). 1 ♂, 3 ♀.

*Syndemis sinapina* (BUTLER), 1879, *Ill. Het. Brit. Ins.*, v. 3, p. 78, t. 60, f. 3 (E. Siberia, Japan).

*Syndemis imitator* WALS., 1900, *A. M. N. H.* (7), v. 5, p. 384, Chusenji, 10-8 — 8-9-1909 (Edme GALLOIS). 4 ♀.

*Peronea placata* MEYR., 1912. — *Exot. Mier.*, v. 1, p. 17 (India). — *Environment of Tokyo, 1906* (J. HARMAND). 1 ♀.

#### EUCOSMIDAE.

*Spilonota prognathana* SNELL, 1883. *Tidj. v. Entom.*, v. 26, p. 227, pl. 13, f. 8 (Japan, E. Siberia, India, China).

*Spilonota calceata* MEYR., 1907, *SYN. NOV.*, *Journ. Bomb. Nat. Hist. Soc.*, v. 18, p. 141. Tokyo, 8-7-1909 (Edme GALLOIS). 1 ♀.

*Ancyliis mitterbacheriana* SCHIFF., 1776. *Syst. Verz. Schmett Wien*, p. 129. (Europe). — Tokyo, 12-5-1910 (Edm. GALLOIS). 1 ♀.

*Argyroploce ptarmicopa* MEYR., 1936. *Exot. Mier.*, v. 4, p. 612. (China, Formosa). — Tokyo, 3-9-7-1909 (Edme GALLOIS). 2 ♂.

*Notocelia suffusana* ZELL., 1846. *Isis*, p. 211 (Europe, Persia). — Chusenji, 28-7-211 (Edme GALLOIS). 1 ♂.

*Eucosma foenella* LINN., 1758. *Syst. Nat.*, ed. X, p. 536 (Japan, India, China, Corea, E. Siberia, Central Asia, Europe, Armenia). — *Environment of Tokyo, 1906* (J. HARMAND). 2 ♀.

*Eucosma luctuosana* DUP., 1838. *Hist. Nat. Lépid.*, v. 9, p. 252, f. 4 (Europe). — *Environment of Tokyo, 1906* (J. HARMAND). 1 ♀.

#### SCHRECKENSTEINIIDAE.

##### *Snellenia ignispergens* nov. spec.

♀ 31 mm. Head dark brownish-black (palpi missing). Antennae with shaft dark brownish-black, ciliations beginning at about 1/4, very long, dull vermilion. Thorax and patagia dull crimson, thorax at the underside dark brown. Abdomen black, a white transverse patch on second tergite, a narrow whitish band along posterior edge of fourth tergite. Legs dark brownish-black, tarsal joint with apical white rings. Fore wing narrowly elongate, costa very slightly concave, almost straight to 4/5, from there gently curved, apex and termen rounded, dull crimson, densely suffused with black along dorsum before fold and everywhere between veins, except a narrow space along costa and termen. Cilia lighter red, mixed with black along basal half. Hind wing dark blackish-brown, greyish at base, suffused with jet-black along dorsum. Cilia black.

Japan (DROUART DE LOSEY). 1 specimen. Near *tarsella* WALS. from Darjeeling, but quite distinct, especially by long red fringe of antennae.

MATERIAL FROM OTHER PARTS OF ASIA AND AUSTRALIA

TORTRICIDAE.

*Zacorisca taminia* (FELD.), 1875. Reise Novara, pl. 139, fig. 29 (Borneo, Java, Timor). — Java, 8-1894 (FRUHSTORFER). 2 ♀.

*Syndemis serpentiana* (WALK.), 1863. Cat. Lep. Het. Mus., v. 28, p. 317 (India, Ceylon, Malay Archipelago, New Guinea). — Ceylon. 1 ♀.

*Syndemis tasmaniana* (WALK.), 1863. Cat. Lep. Het. Brit. Mus., v. 28, p. 365. MEYR. *Proc. L. Soc. N. S. W.*, 1881, p. 524. (S. E. et W. Australia, Tasmania). — Australia, 3 ♂, 3 ♀.

*Argyrotoza joannisi* WALS., 1900. *Ann. Mag. Nat. Hist.* (7), v. 5, p. 455 (China). — China, To-Chi, Shang-Hai, Kiang-Nan. 1 ♂, 2 ♀.

EUCOSMIDAE.

*Lobesia aeolopa* MEYR., 1907. *Journ. Bomb. Nat. Hist. Soc.*, v. 17, p. 976 (India, Ceylon, Formosa). — La Réunion, on vanilla plant. One specimen labelled in handwriting of Abbé DE JOANNIS : « *Conchylis vanillana*, J. de Joannis, type ». Apparently this name never has been published. 4 ♂, 2 ♀.

*Argyroploce acharis* (BUTL.), 1879. *Illustr. Heteroc. Brit. Mus.*, v. 3, p. 80, pl. 60, f. 9 (E. Siberia, Corca, Japan, China). — Corea, Mai Hou Vong, 1 ♂, 1 ♀.

*Argyroploce capreolana* (HERR.-SCHAFF.), 1843-56. *Schmett. Eur.*, v. 4, p. 209 (C. et S. Europe). — China, Environments of Shang Hai, 1 ♂.

*Eucosma metzneriana* (TREIT.), 1830. *Schinett. Eur.*, v. 8, p. 277 (Japan, China, Corea, S. Africa, Central Europe). — China, Zi Ka Wy, Chung Hai, 1 ♂, 1 ♀.

*Laboratoire d'Entomologie du Muséum de Paris et Musée Zoologique d'Amsterdam.*